

Strip Light Aero

The UVEE™ Strip Light Aero™ is a stationary overhead UV Lamp specifically designed for the needs of aerospace component inspection. Custom made lenses enable the Strip Light Aero™ to illuminate a large area whilst still maintaining UV intensity within the limits mandated by international standards. (For convenience, this unit also includes an optional white light source for post- inspection marking of parts).

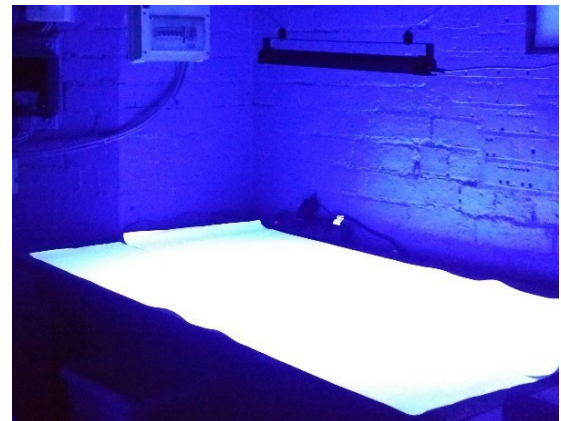


Total compliance with:

- Rolls Royce RRES90061
- Airbus AITM6-1001
- ASTM E3022

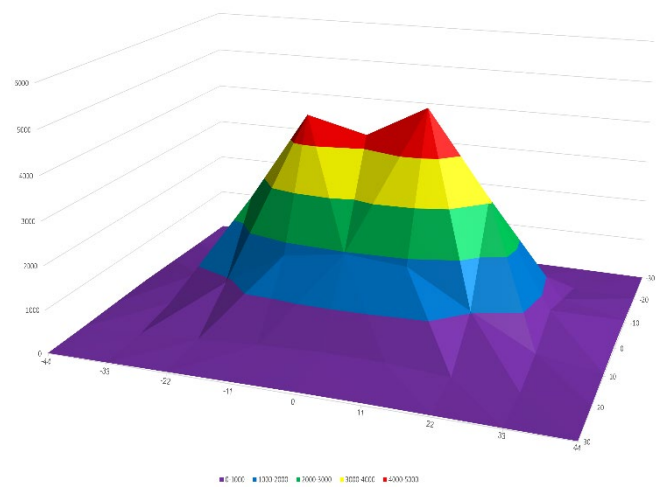
The Strip Light Aero™ has an **ITECP** Embedded Controller Processing unit. The ITECP provides the following benefits:

- Far tighter control of luminous power outputs
- Guarantees that UV output remains at the required level by compensating for temperature of the LEDs
- Full power in less than 2s!

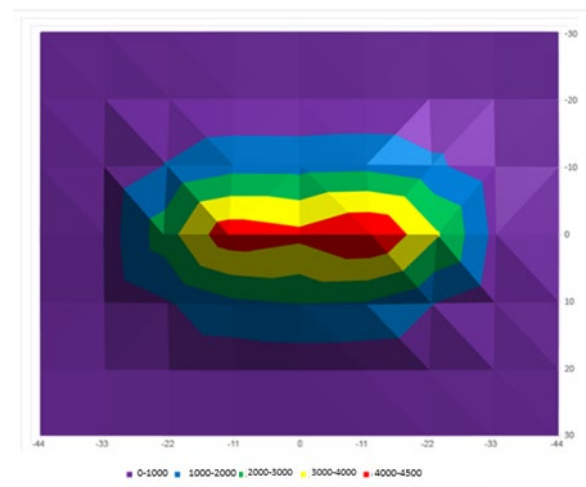


Wide uniform beam

Every unit is supplied with a manufacturer’s certificate of conformance.



3D View of Intensity



Plan View of Intensity

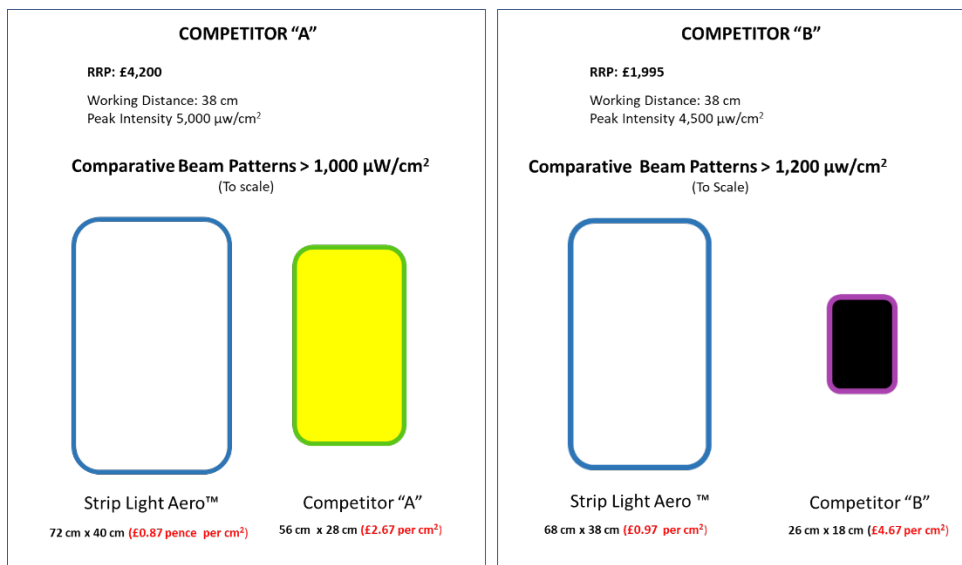
Beam Pattern at 38 cm

Product Specifications

Intensity	Typical irradiance of 4,800 $\mu\text{W}/\text{cm}^2$ at 38cm
Wavelength	UV-A, peak at 365+ 5nm
Visible Light	Less than 10 lux@ 38 cm
Power	Mains (24V DC Adapter)
Working Temperature	0° - 50° C (automatic cut-off)
Dimensions	670mm x 75mm x 50mm (26" x 3" x 2")
Weight	< 2.5kg (5.5lb)
Mounting	Adjustable metal chain
Certifications	<ul style="list-style-type: none"> Rolls Royce RRES90061 Airbus AITM6-1001 ASTM E3022
Warranty	2 Years

Typical Beam Profiles

Distance	Peak Intensity	> 1,000 $\mu\text{W}/\text{cm}^2$	> 300 $\mu\text{W}/\text{cm}^2$
38 cm/ 15"	4,800 $\mu\text{W}/\text{cm}^2$	40 cm x 72 cm / 16" x 28"	60 cm x 90 cm / 24" x 35"
91 cm/36"	1,650 $\mu\text{W}/\text{cm}^2$	36 cm x 70 cm /14" x 28"	90 cm x 120 cm / 35" x 47"
122 cm/ 48"	1,200 $\mu\text{W}/\text{cm}^2$	24 cm x 36 cm / 10 "x 14"	100 cm x 100 cm / 39" x 39"



100% Designed and Built in the UK